



---

# Friends of Catherine and Channel Lakes Community Meeting

June 4, 2020

Via Zoom

# Agenda

- Mission
- Actions to Date
- Harvesting Program



# Our Mission

- ▶ Established in late 2016, Friends of Catherine and Channel Lakes' mission is to maintain the sanctity of Lake Catherine and Channel Lakes, to continuously improve and maintain the lakes' ecosystem, and to establish and implement value-enriched programs to enhance the overall quality of lake life.
- ▶ Our goal is to return Lake Catherine and Channel Lake to pristine condition by eradicating invasive plant species, reducing pollution and increasing awareness about how to care for the lakes. We are doing this through the implementation of a detailed [Lake Management Plan](#), which has been reviewed and approved by the EPA, IDNR and Fox Waterway Agency.
- ▶ Please join the cause by getting involved. Many hands make light work!



Prepared For: Friends of Lake Catherine & Channel Lakes  
3216 N. Hoyne Avenue  
Chicago, IL 60618

Prepared By: Keith Gray/Sandy Kubilus  
ILM  
110 Le Baron St.  
Waukegan, IL 60085  
(847) 244-6662

# What have we been up to?

- ▶ Lake Management Plan
- ▶ Harvesting Program
- ▶ Filtration Program
- ▶ Bio-Augmentation Pilot Program
- ▶ Water Quality Monitoring

For more information, visit:

<https://catherineandchannellakes.org/projects/>



Several studies have shown that property values decline by up to 20% when weedy vegetation forms in front of a lakeside residence.





# Harvesting Facts

- ▶ Harvesting is like cutting the grass
- ▶ You see results immediately
- ▶ Harvesting is more eco-friendly than chemical treatments
- ▶ Harvesting does not eliminate plants that are vital for fish habitat
- ▶ Native plants are good; invasive plants are not
- ▶ Harvesting will take algae that is attached to plants; harvesting is not a solution for algae blooms







# Harvesting Program

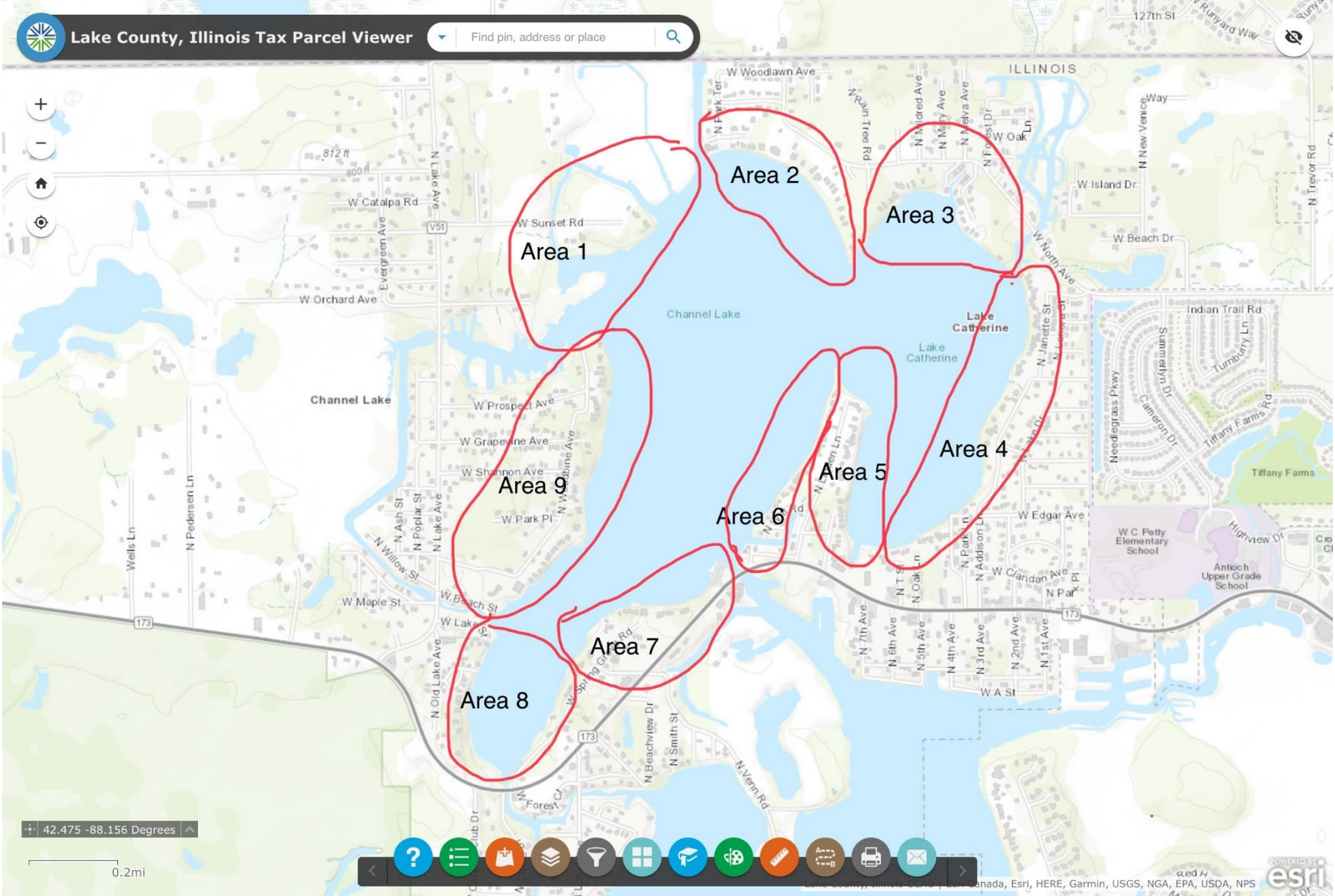
- ▶ Eurasian Water Milfoil and Coontail are the two primary invasive plant populations in the lakes
- ▶ 300-page Conservation Plan and Incidental Take Assessment
- ▶ Illinois Department of Natural Resources approved the program in late-spring 2020
- ▶ Permit allows Friends of Catherine and Channel Lakes to harvest up to 70 acres in the spring and 70 acres in the summer from 3 feet to 12 feet water depth leaving at least a foot of plant on the bottom
- ▶ Must prioritize the densest growth areas first
- ▶ No harvesting where chemical treatments take place



# Harvesting Program

- ▶ Because of strong stakeholder support, Friends of Catherine and Channel Lakes will fund the first round of harvesting in the spring of 2020 (June)
- ▶ Homeowners, businesses and associations around the lakes will pay for harvesting services going forward
- ▶ The cost for harvesting services going forward will be determined in the coming weeks
- ▶ Second cut in August





**Paid:**

**Still to  
be  
paid:**

## Cost

- \$10,000 – conservation plan and ITA
- \$22,000 – first cut of 70 acres
  
- \$3,000 – fish study (required by permit)
- \$6,000 – planting of native species
- \$2,000 – ongoing reporting
- \$22,000 – second cut 70 acres

We  
Need  
You!



Donate today!



Prepare to invest in  
this harvesting  
program every year  
to keep it going

Put your  
chemical  
treatment  
money toward  
this instead



Help us with other projects – filtration,  
aeration, bio-augmentation, etc.

**Goal:** Buy and operate our own harvester!



## Connect with Us

- ▶ <https://www.facebook.com/CatherineandChannel/>
- ▶ <https://catherineandchannellakes.org/>
- ▶ Join our email list!





---

Thank you.

A decorative graphic in the bottom left corner consists of several thin, dark blue lines that curve upwards and to the right, resembling stylized reeds or grass.